

# TAKLIMAT PROJEK PERKHIDMATAN 1BESTARINET

**16 Feb 2012**

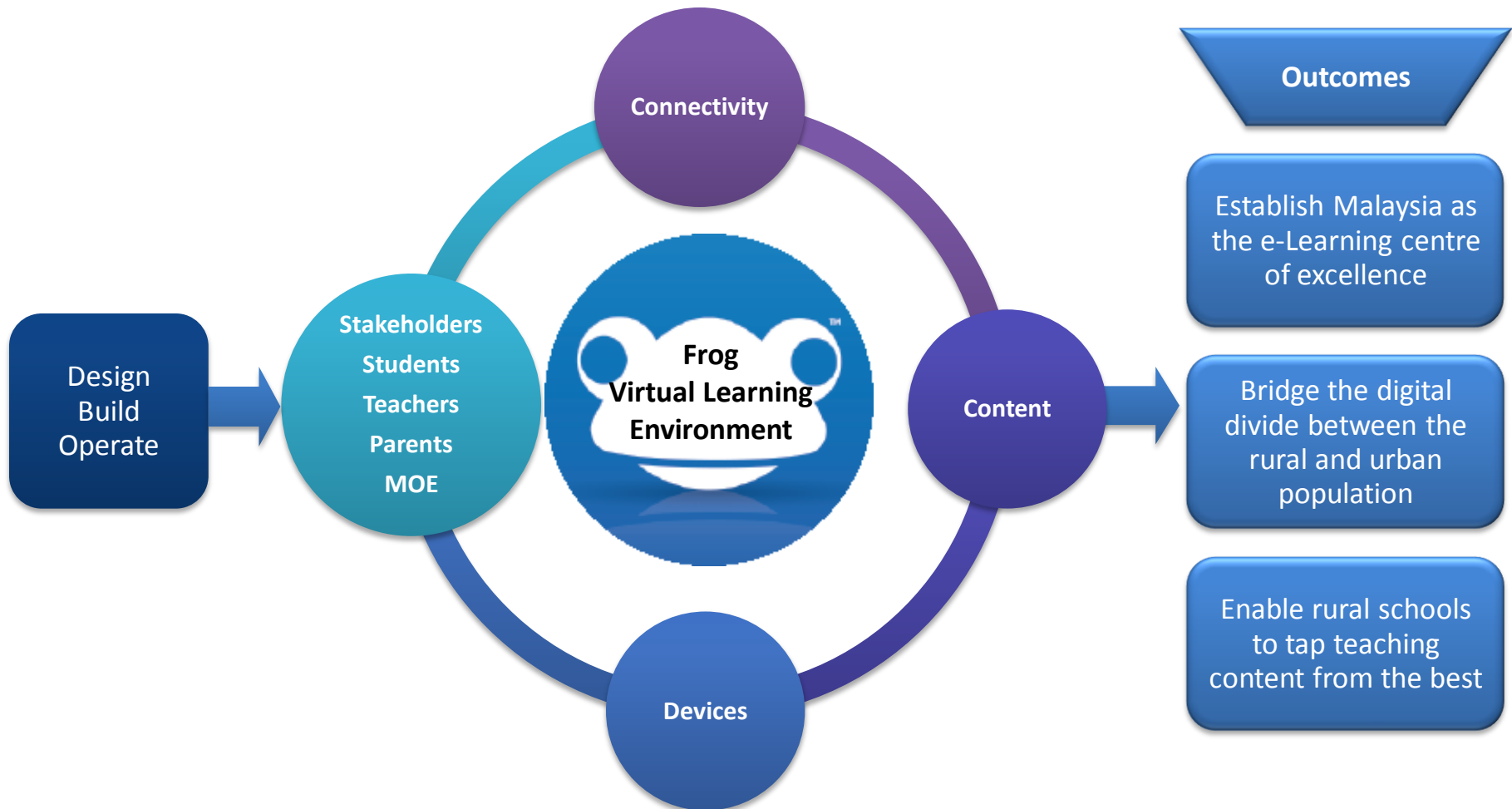
# 1BestariNet Solutions Overview

- YTL Communications, a subsidiary within the YTL Corporation Bhd, was awarded 4G WiMAX (NSP,NFP,ISP&ASP) license by the Malaysian Communications and Multimedia Commission (MCMC) to roll out nationwide.
- YTL's WiMAX standard, 802.16e 4G technology (full IP), has the capability to provide ubiquitous, higher speed, quality mobile broadband internet access – 'Anytime, Anywhere' and 'On the Move'.
- This is cutting edge technology that has been successfully deployed by other developed countries (USA, Europe, Korea & Japan) and will be the first in the country.
- We are building a 4G-WiMAX ecosystem, with global partnerships with CISCO, Clearwire, Frog, Oracle, Ericsson, NSN, Samsung etc
- Having been appointed by Kementerian Pelajaran Malaysia to deliver 1Bestarinet Project



## END-TO-END INTEGRATED SOLUTION

An end-to-end integrated solution through a single point of accountability is the best way to ensure successful implementation for the transformation of education in Malaysia.



# End to End Integrated Solution

:



**Solution to all schools – equal access**



**Integrated Solution – Simplify**



**FROG VLE – proven, world class application**

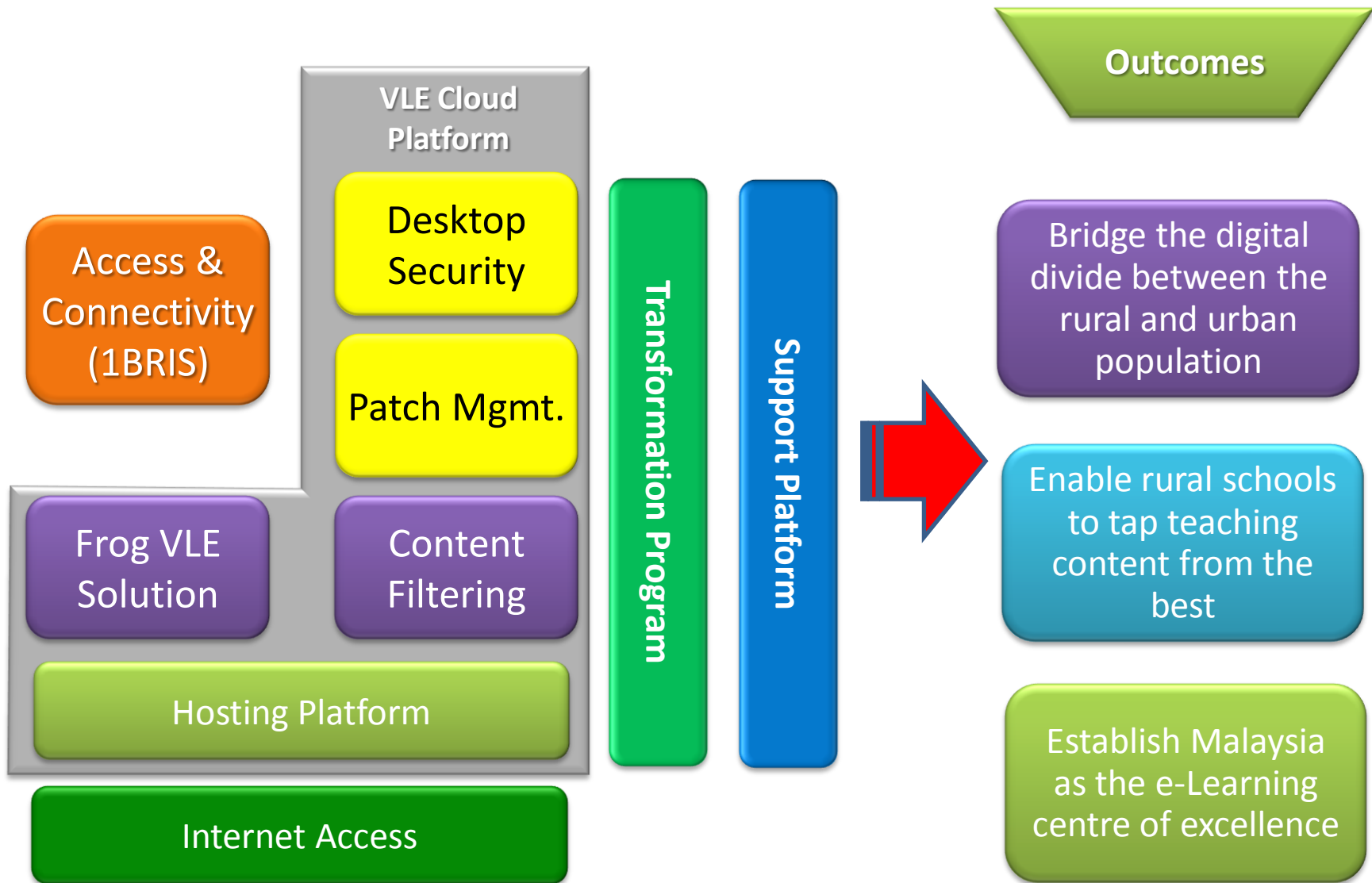


**Cloud Computing for Education**

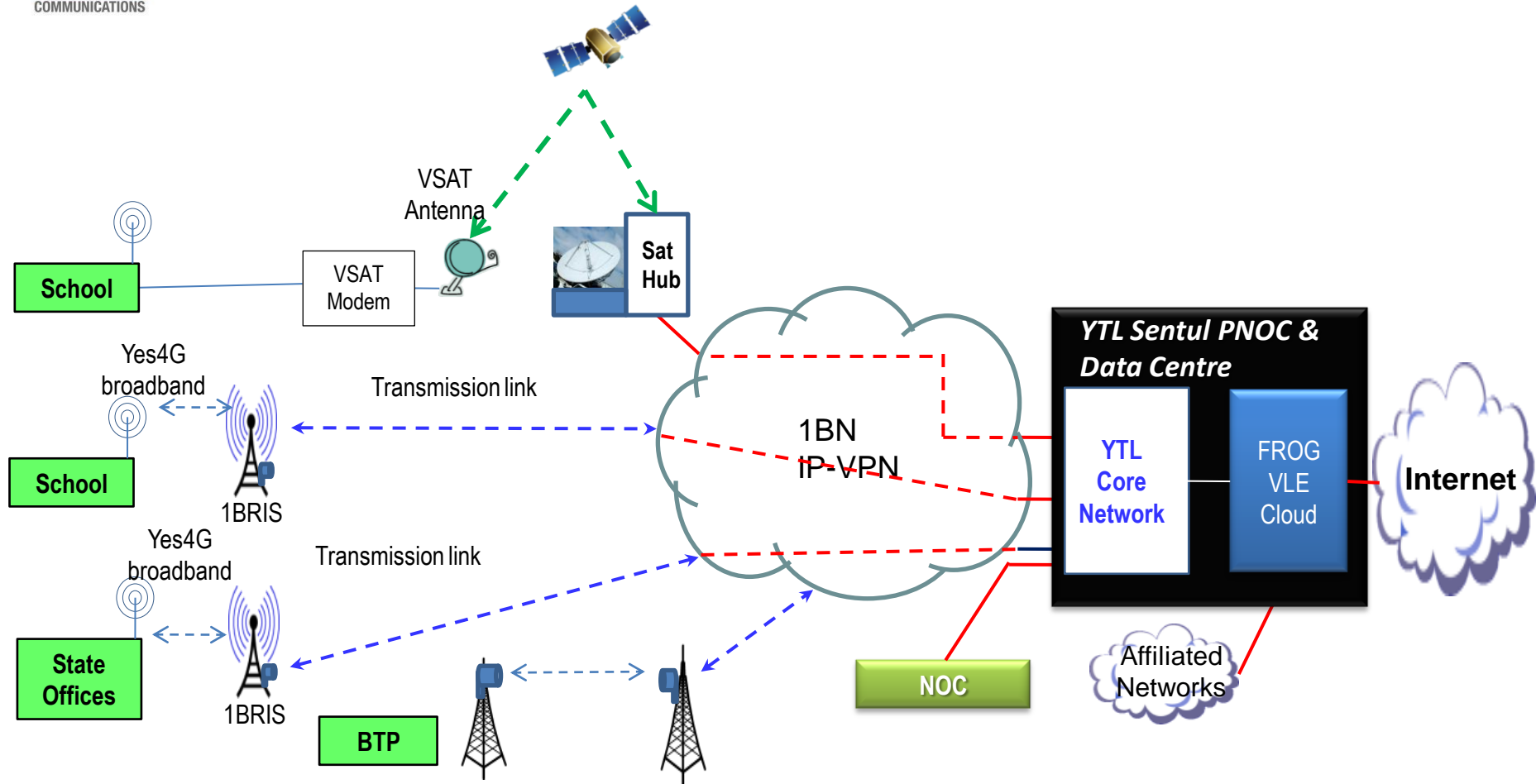


**Change Management and Training**

# Main Components in 1BestariNet Solution

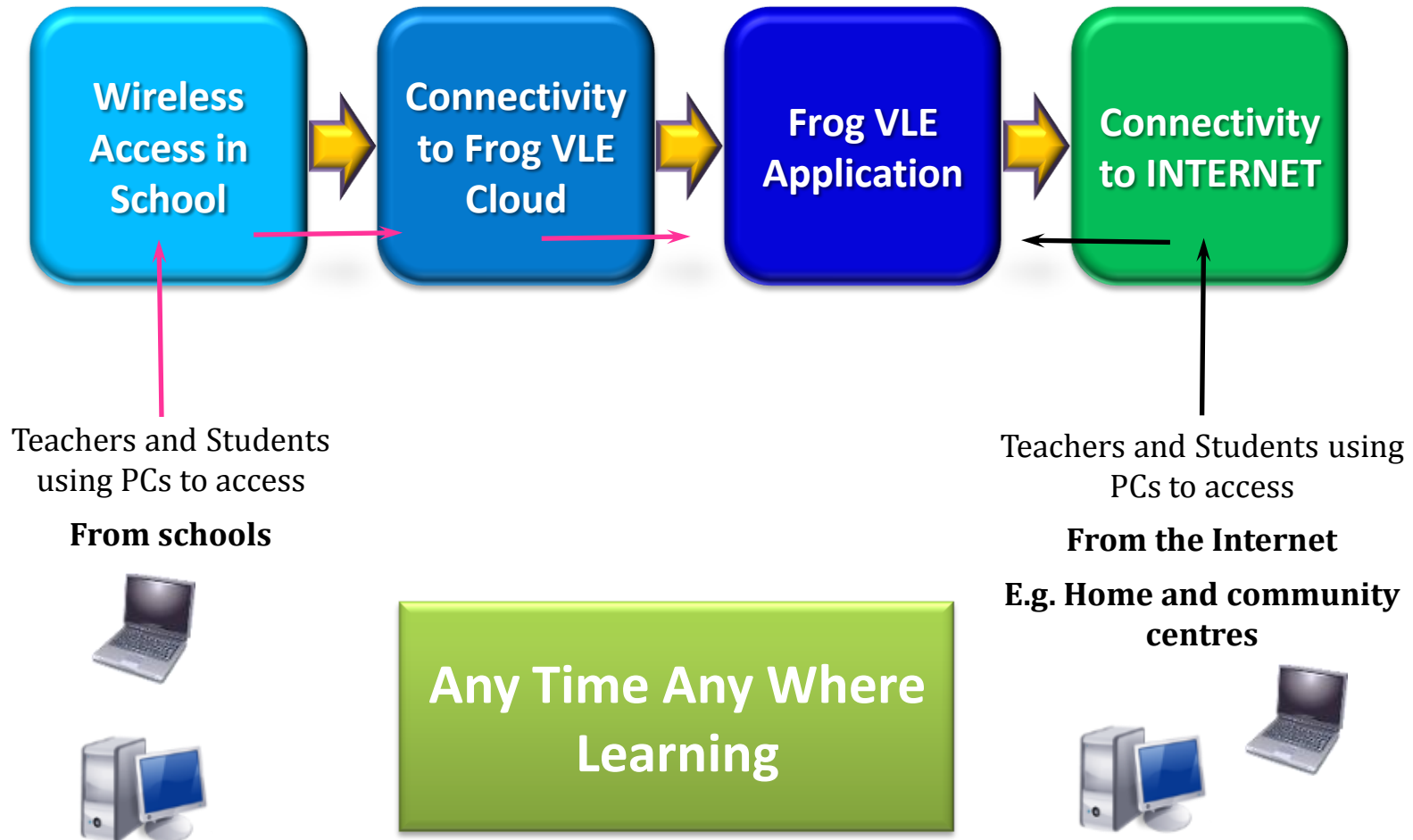


# 1BestariNet Connectivity Overview



All key services like Frog VLE, Security Management and Hosting will located in the cloud (thru IP-VPN).

# Core Components of Solution

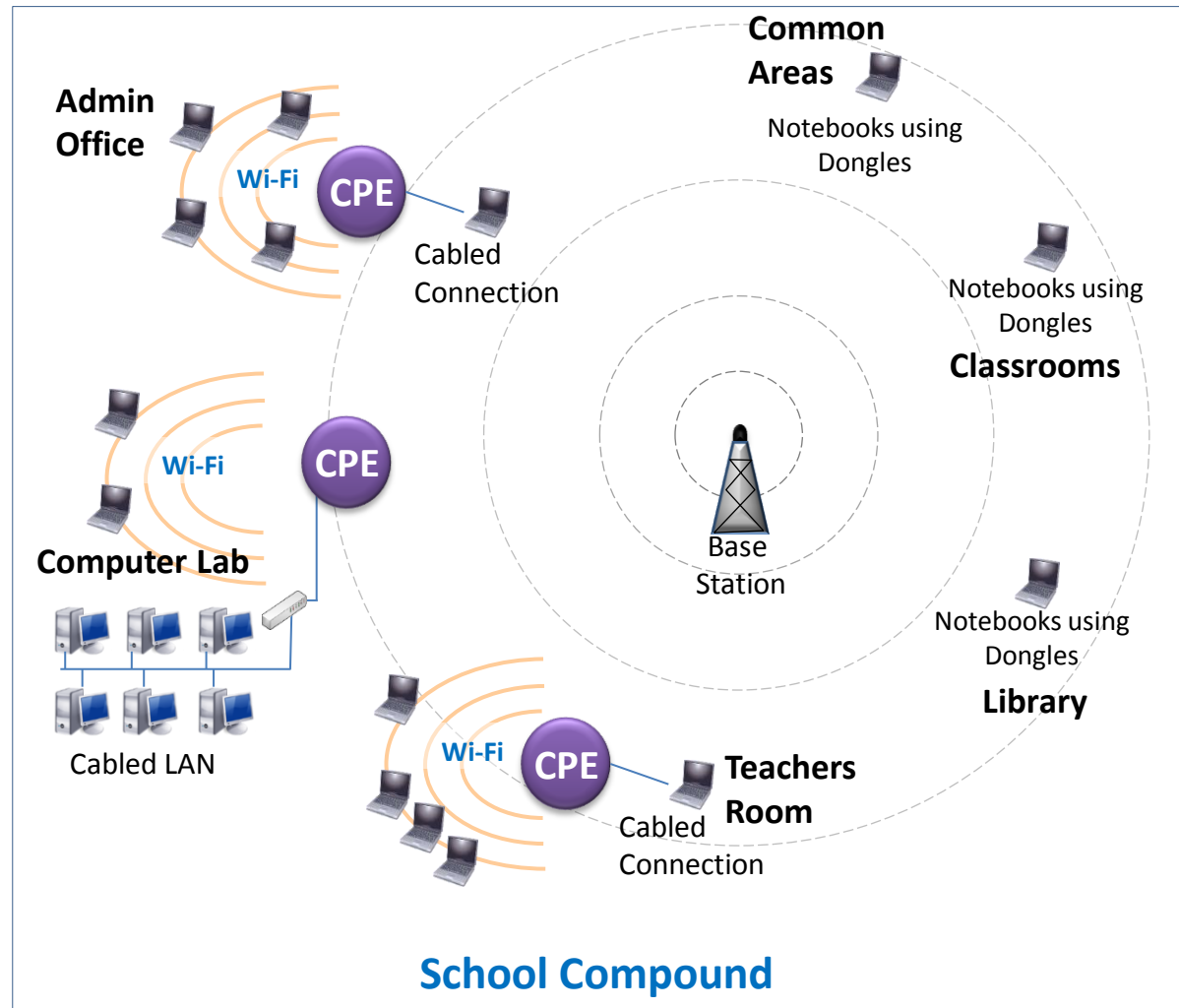




# Summary of connectivity to the Schools

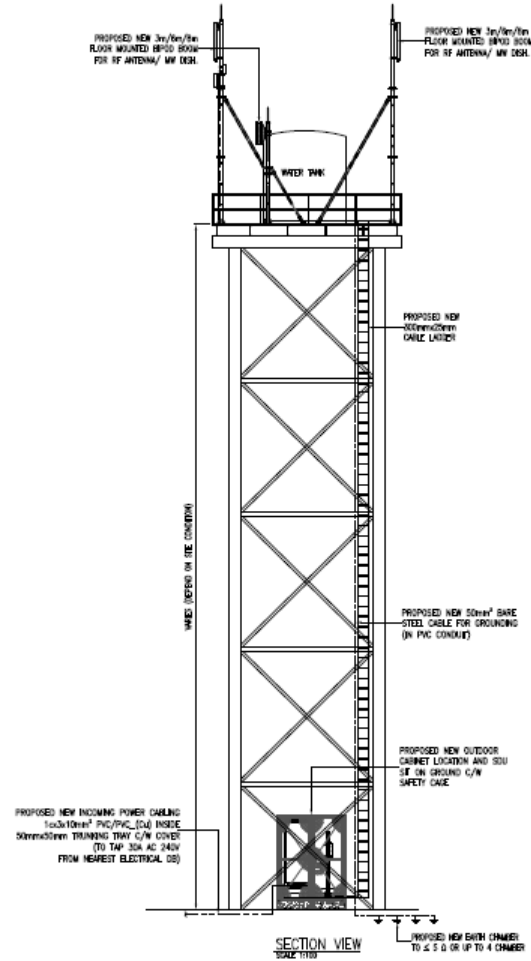
Each school will be served by a base station that was connected back to the 1Bestarinet data centre installed within its premise. The base station will provide connectivity access in all common areas of the school using WiMAX or WiFi using a CPE.

- \* Each CPE is equivalent to a wired Internet connection from the Internet service providers. Therefore the internet feed delivered to the site was equivalent to having three Internet Connection being provided to the school.



# Yes 4G CPE - ZOOM



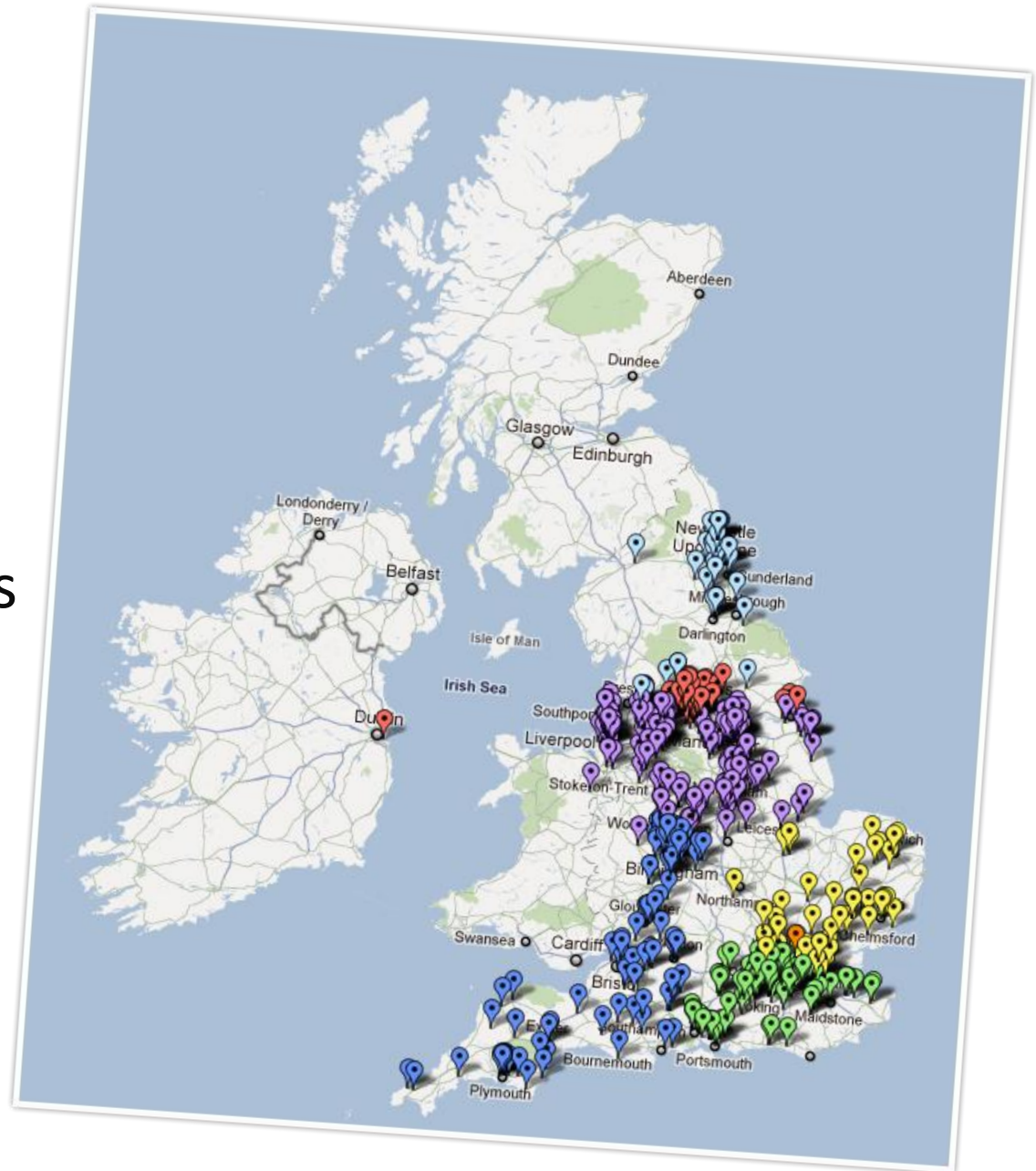


# What is Frog?

- Awesome user interface.
- Real-Time communication tools, focused on supporting learning.
- Creation of engaging content.
- Widget store to share resources across Malaysia.
- Creativity and innovation in the classroom.



Used Across  
**75%** of UK  
Local Authorities



# Real Examples of Use of Frog



The screenshot displays a user interface for a school website, likely Harrow School, integrated with the Frog Learning Platform. The interface is dark-themed and includes several key components:

- Top Navigation:** A blue header bar with icons for 'MY SET WORK', 'MARKBOOK', 'EMAIL', 'R.O.A', 'PLANNER', and 'DRIVES'. Below this, a secondary bar shows 'PERSONAL', 'STAFF ROOM', and 'CLASSROOM' options.
- Header:** The school's name 'ST JOHN'S COLLEGE SOUTHSEA' is visible on the left, and 'HARROW' is prominently displayed in the center with a crest. The tagline 'LEADERSHIP FOR A BETTER WORLD' is also present.
- Content Area:**
  - Latest News:** A section titled 'The school has now released the new Frog Learning Platform to staff and students.'
  - SCHOOL NOTICEBOARD:** A central section with a red header, containing a 'NEW SCHOOL LEARNING PLATFORM' announcement and a 'SCHOOL VISIT TO NEW YORK' update with a photo gallery.
  - MY DOCUMENTS:** A sidebar on the right listing files such as 'Lectures', 'VLE Help Documents', 'Entry\_Register.doc', 'SEN\_Information.doc', and 'Student\_Medical\_Information.pdf'.
  - MY LINKS:** A sidebar on the right with links to 'Facebook', 'Frog Learning Platform', 'Google.mal.uk', and 'Harrow School website'.
- Bottom Section:** A white box titled 'Exams This Week' with the text: 'There are exams in the great hall this week so please be sure to keep noise to a minimum.'

## A VLE should enable teachers to:

Create and **share** teaching materials more effectively so save time.

Access a larger **variety** of learning materials for the needs of their pupils.

Access lesson plans from colleagues **anywhere**.

Talk to the **wider world**.

**Manage** timetables, diary, email and discussions.

**Receive work** from pupils that is easy to manage.

**Monitor and track** individual and group progress.

## A VLE should enable students to:

Improve their **ICT skills**

Participate in **live discussions** and forums with other students and teachers

Communicate by **email**

Work at their **own pace**

Access notes, assignments, homework and revision **outside** normal school hours

Submit homework and assignments for **marking and assessment**

Access learning materials created by their teachers and others, **outside** lesson time

Create **online portfolio**, including digital photos and videos.



# HELPDESK

**Phone : 018-7998787 (Technical Issues)**

**018-7998771 (Schedule Enquiry)**

**Email : [moesupport@ytlcomms.my](mailto:moesupport@ytlcomms.my)**

# Terima Kasih